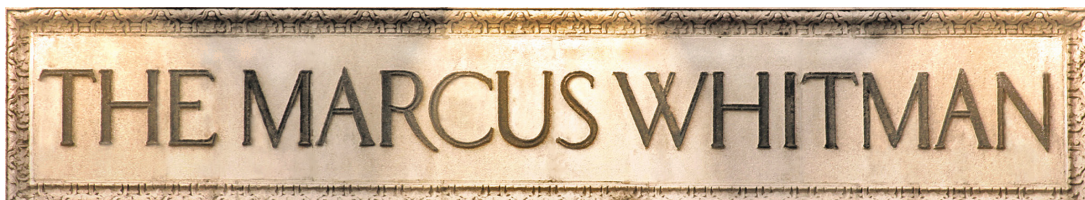


## TABLE OF CONTENTS

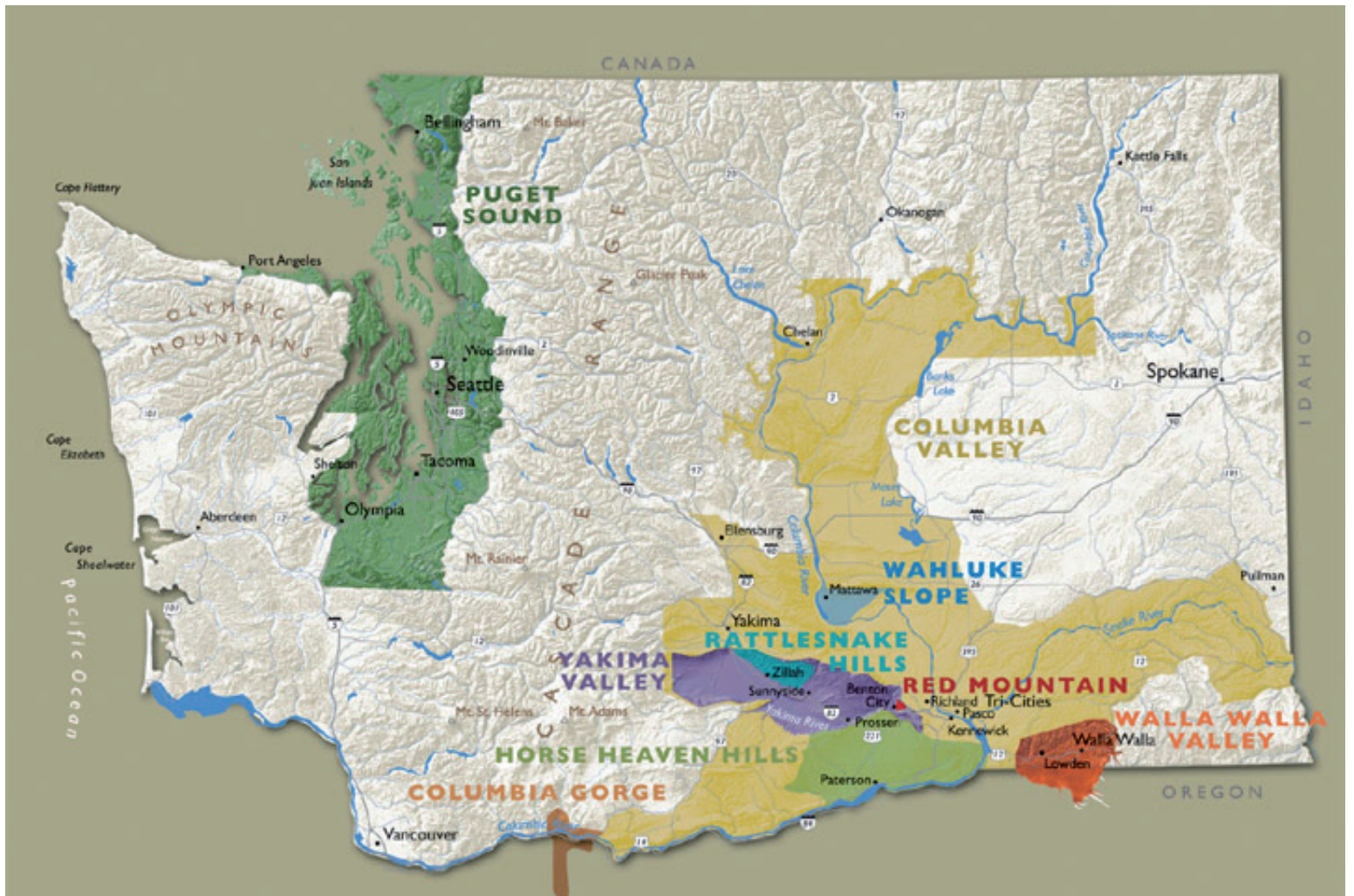
WINES BY THE GLASS	I
CHAMPAGNE, SPARKLING WINE, & HARD CIDER	2
CABERNET SAUVIGNON	3
MERLOT	4
SYRAH	5
OTHER REDS	6
PINOT NOIR	6
RED BLENDS	7
CHARDONNAY	8
RIESLING	8
VIOGNIER	8
OTHER WHITES	9
ROSE	9
DESSERT WINE	10
PORT	10
THE MARC CELLAR LIBRARY SELECTIONS	11
LARGE FORMAT	11
WINES ALPHABETICALLY LISTED	12-22

### WINE PHILOSOPHY

As Walla Walla's premier luxury hotel, the wine list at the Marcus Whitman Hotel focuses primarily on local vineyards and producers. We are blessed to be in one of the world's most exciting wine regions. From the coastal climates of the West, to the desert climates of the East, Washington State is unmatched in varietals, styles, and quality. We hope you enjoy our offerings. Please let us know if you have a personal favorite not listed. You may find it here on your next visit.



*Exceptional Guest Experiences for Every Guest*



## WASHINGTON AVA REGIONS

What is so unique about Washington wine country? First, there are two distinct sides to Washington State; Eastern Washington, where most of the vinifera (wine) grapes are grown and which has desert-like conditions and sparse population; and Western Washington where the temperate conditions are more conducive to growing cooler climate vinifera and non-vinifera grapes, but where most of the state's population resides.

The individual soils of Washington State vineyards vary, but overall it is said that Washington has sandy, silty, loam soils as a result of ancient cataclysmic flooding, volcanic and glacial action. These soils drain well and are conducive to deep root growth - important for vines to make it through cyclical freeze events in Eastern Washington. These soils also stop the vineyard pest phylloxera from spreading, allowing our vinifera vines to be planted on their own rootstock.

### Walla Walla Valley AVA

Established in 1984, the Walla Walla Valley AVA has a rich history of wine grape growing by the immigrants who settled this area. Walla Walla was once the largest city in the Washington territory so plantings go back to the 1800's. This area only has about 1,600 acres of vineyard due to the threat of "freeze events". Historically, wineries established in Walla Walla (over 100 now call Walla Walla home) sourced their wine grapes from the Yakima and Columbia Valleys, but that is changing as growing practices improve. In fact, Walla Walla is on the forefront of sustainable wine grape growing establishing organizations such as the Walla Walla Valley Vineyard, The Winegrowers Sustainable Trust. The most widely planted grapes grown here are Cabernet Sauvignon, Merlot, Chardonnay and Syrah. Walla Walla gets a bit more rain than other wine growing areas with about 12 inches of annual rainfall.

# WINES BY THE GLASS

## Signature Wine

**Marcus Whitman, White**, Chardonnay, Columbia Valley, 2013 7  
100% Chardonnay

*"This rich barrel fermented Chardonnay was handcrafted especially for The Marc by L'Ecole N° 41. With pretty floral and ripe apple aromas, this creamy Chardonnay shows flavors of apple, pear, and tropical fruit on an underlying mineral finish."* - Marty Clubb, Owner & Managing Winemaker, L'Ecole N° 41

**Marcus Whitman Red**, Columbia Valley, 2013 8  
50% Merlot, 29% Cabernet Sauvignon, 14% Cabernet Franc, 7% Petit Verdot

*"This fruit driven Bordeaux varietal red blend was handcrafted especially for The Marc by L'Ecole N° 41. Spicy, rose petal aromas lead into fresh red fruit and dark cherry flavors on a balanced finish of earth and cocoa."*  
- Marty Clubb, Owner & Managing Winemaker, L'Ecole N° 41

## Sparkling

**Blanc de Noirs**, Domaine Chandon, California, NV 9

**Prosecco Organic**, Mionetto, Italy, NV 8

## Blanc

**Albarino**, Salida Cellars, Yakima Valley, 2014 10

**Riesling**, Long Shadows, Poet's Leap, Columbia Valley, 2015 9

## Rouge

**Cabernet Sauvignon**, Five Star Cellars, Walla Walla Valley, 2012 12

**Cabernet Sauvignon**, Woodward Canyon, Artist Series #22, WA, 2013 17

**Merlot**, L'Ecole N°41 Winery, Columbia Valley, 2013 8

**Pinot Noir**, Saviah Cellars, Walla Walla Valley, 2013 10

**Syrah**, Rotie Cellars, Northern Blend, Walla Walla Valley, 2013 16

## Dessert Wine/After Dinner

**Alexander The Grape**, Semillon, Ice Wine, Red Mountain, 2010 7

**Cockburn**, 20 Year Tawny Port, Portugal 14

**Grahams**, Vintage Port, Portugal, 2011 16

**Zerba Cellars**, LH, Syrah, Port, Walla Walla Valley, 2012 12

# CHAMPAGNE

<b>Moet &amp; Chandon</b> , White Star, France, NV	79
<b>Perrier Jouet</b> , Grand Brut, France, NV	82
<b>Veuve Clicquot</b> , Brut, France, NV	100

# SPARKLING WINE

<b>Argyle</b> , Blanc de Blanc, Oregon, 2012	55
<b>Castillo de Feliciano</b> , Brillante, Columbia Valley, 2013	53
<b>Domaine Chandon</b> , Blanc de Noirs, California, NV	37
<b>Domain Ste. Michelle</b> , Cuvee Brut, Columbia Valley, NV	22
<b>Mionetto</b> , Prosecco, Italy, NV	23

# HARD CIDER

<b>Blue Mountain Cider</b> , Dry Creek, Semi-Dry, Hard Apple Cider	10
--	----

## Non-Alcoholic

<b>Sheffield</b> , Cider Classic Sweet, Mesa, WA	15
--	----

# CABERNET SAUVIGNON

128	<b>Amavi Cellars</b> , Walla Walla Valley, 2013	58
123	<b>Bergevin Lane</b> , Moonspell, Columbia Valley, 2011	49
106	<b>Betz</b> , "Père de Famille," Columbia Valley, 2013	127
126	<b>Brady Cellars</b> , Blue Mountain Vineyard, Walla Walla Valley, 2014	58
116	<b>Canvasback</b> , Red Mountain, 2013	64
129	<b>DaMa Wines</b> , Cowgirl Cab, Columbia Valley, 2012	41
135	<b>Doubleback</b> , Walla Walla Valley, 2013	173
120	<b>Double Canyon</b> , Horse Heaven Hills, 2011	75
102	<b>Dunham Cellars</b> , XVIII, Columbia Valley, 2013	73
132	<b>Dusted Valley</b> , Columbia Valley, 2013	60
125	<b>Five Star</b> , Walla Walla Valley, 2012	50
109	<b>Forgeron Cellars</b> , Columbia Valley, 2012	56
105	<b>Fort Walla Walla Cellars</b> , Walla Walla Valley, 2009	62
117	<b>Garrison Creek Cellars</b> , Walla Walla Valley, 2010	102
119	<b>Gramercy Cellars</b> , Columbia Valley, 2012	81
110	<b>Kontos Cellars</b> , Walla Walla Valley, 2010	62
112	<b>L'Ecole N° 41 Winery</b> , Walla Walla Valley, 2013	65
127	<b>Lodmell Cellars</b> , Columbia Valley, 2009	62
122	<b>Long Shadows</b> , Feather, Columbia Valley, 2013	105
130	<b>Novelty Hill</b> , Columbia Valley, 2011	41
121	<b>Otis Kenyon</b> , Walla Walla Valley, 2013	83
118	<b>Pepper Bridge</b> , Walla Walla Valley, 2012	92
134	<b>Pursued by Bear</b> , Columbia Valley, 2011	105
111	<b>Quilceda Creek</b> , Columbia Valley, 2012	276
115	<b>Seven Hills Winery</b> , Walla Walla Valley, 2013	58
114	<b>Su Lei Cellars</b> , Les Collines Vineyard, Walla Walla Valley, 2010	56
138	<b>Sweet Valley</b> , Walla Walla Valley, 2009	62
108	<b>SYZGY</b> , Columbia Valley, 2009	64
107	<b>Tero Estates</b> , Hill Block, Walla Walla Valley, 2010	85
131	<b>Tertulia Cellars</b> , Phinney Hill Vineyard, Horse Heaven Hills, 2011	58
136	<b>Three Rivers Winery</b> , Champoux, Columbia Valley, 2007	95
101	<b>Three Rivers Winery</b> , Walla Walla Valley, 2014	63
124	<b>Va Piano</b> , Columbia Valley, 2012	73
113	<b>Va Piano</b> , Bruno's, Columbia Valley, 2011	35
104	<b>Woodward Canyon</b> , Artist Series #22, Washington State, 2013	68
103	<b>Woodward Canyon</b> , Old Vines, WA, 2013	161
133	<b>Zerba Cellars</b> , Walla Walla Valley, 2012	53

# MERLOT

227	<b>Bergevin Lane</b> , “Wild Child,” Columbia Valley, 2011	49
206	<b>Bunchgrass Winery</b> , Walla Walla Valley, 2012	62
223	<b>Couvillon</b> , Sagemoor, Columbia Valley, 2009	35
228	<b>DaMa Wines</b> , Walla Walla Valley, 2013	58
217	<b>Don Carlo Vineyard</b> , “Estate,” Walla Walla Valley, 2009	38
214	<b>Dunham Cellars</b> , Lewis Vineyard, Columbia Valley, 2006	121
211	<b>Forgeron Cellars</b> , Columbia Valley, 2012	53
218	<b>Fort Walla Walla Cellars</b> , Walla Walla Valley, 2009	56
231	<b>Glencorrie Winery</b> , Columbia Valley, 2011	56
209	<b>Kontos Cellars</b> , Walla Walla Valley, 2013	58
205	<b>L’Ecole N° 41 Winery</b> , Walla Walla Valley, 2013	62
215	<b>L’Ecole N° 41 Winery</b> , Columbia Valley, 2013	44
210	<b>Leonetti Cellar</b> , Walla Walla Valley, 2014	130
222	<b>Long Shadows</b> , Pedestal, Columbia Valley, 2013	97
208	<b>Northstar</b> , Columbia Valley, 2012	67
229	<b>Otis Kenyon</b> , Walla Walla Valley, 2013	69
201	<b>Pepper Bridge</b> , Walla Walla Valley, 2013	81
220	<b>Reininger</b> , Walla Walla Valley, 2011	66
226	<b>Russell Creek Winery</b> , Columbia Valley, 2007	62
219	<b>Seven Hills Winery</b> , Walla Walla Valley, 2013	58
225	<b>Seven Hills Winery</b> , Columbia Valley, 2013	37
202	<b>Sinclair Estate Vineyards</b> , Columbia Valley, 2007	65
204	<b>Spring Valley Vineyard</b> , Mule Skinner Walla Walla Valley, 2012	73
212	<b>Tamarack Cellars</b> , Columbia Valley, 2013	50
200	<b>Three Rivers Winery</b> , Champoux, Columbia Valley, 2010	63
224	<b>Three Rivers Winery</b> , Columbia Valley, 2013	40
216	<b>Waterbrook</b> , Reserve Columbia Valley, 2013	47
203	<b>Woodward Canyon</b> , Columbia Valley, 2013	84
213	<b>Zerba Cellars</b> , Walla Walla Valley, 2010	53

# SYRAH

308	<b>Alexander The Grape</b> , “The Empress”, Red Mountain, 2009	69
318	<b>Amavi Cellars</b> , Walla Walla Valley, 2013	50
324	<b>Ardor Cellars</b> , Lawrence Vineyard, Columbia Valley, 2013	64
310	<b>Balboa Winery</b> , Walla Walla Valley, 2012	39
301	<b>Bergevin Lane</b> , “She Devil,” Columbia Valley, 2012	42
325	<b>Cadaretta</b> , Columbia Valley, 2011	62
329	<b>Cougar Crest Winery</b> , Reserve, Walla Walla Valley, 2008	69
304	<b>DaMa Wines</b> , Columbia Valley, 2013	60
316	<b>Dumas Station</b> , Estate, Walla Walla Valley, 2010	59
315	<b>Dunham Cellars</b> , Columbia Valley, 2012	62
319	<b>Elephant Seven Wines</b> , Yellow Bird Vineyard, Walla Walla Valley, 2014	73
312	<b>Garrison Creek Cellars</b> , Walla Walla Valley, 2010	102
320	<b>Gramercy Cellars</b> , “Lagnippe” Columbia Valley, 2013	89
300	<b>Isenhower Cellars</b> , River Beauty, Columbia Valley, 2013	60
330	<b>Kontos Cellars</b> , Les Collines, Walla Walla Valley, 2013	71
321	<b>L’Ecole N° 41 Winery</b> , Columbia Valley, 2013	44
314	<b>Mackey Vineyards</b> , Walla Walla Valley, 2009	40
303	<b>Morrison Lane</b> , Walla Walla Valley, 2012	56
302	<b>Otis Kenyon</b> , Walla Walla Valley, 2012	69
313	<b>Plumb Cellars</b> , Walla Walla Valley, 2012	60
323	<b>Revelry Vintners</b> , Block 19, Wahluke Slope, 2011	69
307	<b>Rotie Cellars</b> , Northern Blend, WA State, 2013	64
309	<b>Skylite Cellars</b> , Walla Walla Valley, 2010	53
305	<b>SYZYG</b> , Walla Walla Valley, 2009	60
306	<b>Va Piano</b> , Columbia Valley, 2013	73
311	<b>Va Piano</b> , Les Collines, Walla Walla Valley, 2013	105
328	<b>Zerba Cellars</b> , Petite Sirah, Walla Walla Valley, 2012	89

## OTHER REDS

417	<b>Alexandria Nicole Cellars</b> , Sergeant Pepper, Carmenere, HHH, 2012	73
406	<b>áMaurice</b> , Malbec, Columbia Valley, 2013	62
426	<b>Ardor Cellars</b> , Mourvedre, Yakima Valley, 2014	64
432	<b>Ardor Cellars</b> , GSM, Columbia Valley, 2014	44
401	<b>Brian Carter Cellars</b> , Tutturosso, Columbia Valley, 2008	61
412	<b>Brian Carter Cellars</b> , Corrida, Columbia Valley, 2009	61
419	<b>Bunchgrass Winery</b> , The Bard, Walla Walla Valley, 2012	53
405	<b>Castillo de Feliciano</b> , Rosebud, Tempranillo, Columbia Valley, 2012	32
404	<b>Cavu Cellars</b> , Barbera, Horse Heaven Hills, 2011	53
427	<b>Cougar Crest</b> , Cabernet Franc, Walla Walla Valley, 2009	63
430	<b>DaMa Wines</b> , Damnation, GSM, Columbia Valley, 2011	63
414	<b>Flying Trout</b> Malbec, Rattlesnake Hills, 2013	65
410	<b>Garofalo Family Winery</b> , Vino Rosso, Columbia Valley, 2010	25
424	<b>Gilbert Cellars</b> , Allobroges, Wahluke Slope, 2012	42
425	<b>Gramercy Cellars</b> , Tempranillo, Walla Walla Valley, 2013	97
421	<b>Isenhower Cellars</b> , Jongleur, Petit Verdot, Columbia Valley, 2013	60
420	<b>Isenhower Cellars</b> , Rara Avis, Columbia Valley, 2014	60
434	<b>Kerloo Cellars</b> , Tempranillo, Columbia Valley, 2011	55
423	<b>Locati Cellars</b> , Sangiovese, Walla Walla Valley, 2011	44
429	<b>Locati Cellars</b> , Barbera, Walla Walla Valley, 2013	45
431	<b>Mannina Cellars</b> , Seven Hills, Sangiovese, Walla Walla Valley, 2011	39
402	<b>Morrison Lane</b> , Cinsault, Walla Walla Valley, 2012	58
433	<b>Plumb Cellars</b> , Sangiovese, Walla Walla Valley, 2012	60
411	<b>Rasa Vineyards</b> , Monette's Vineyard, Mourvedre, Walla Walla Valley, 2011	69
407	<b>Rotie Cellars</b> , Southern Blend, WA State, 2013	78
403	<b>Russell Creek Winery</b> , Sangiovese, Columbia Valley, 2008	50
435	<b>Salida Cellars</b> , Tempranillo, Yakima Valley, 2012	45
415	<b>Saviah Cellars</b> , Cabernet Franc, Walla Walla Valley, 2012	49
416	<b>Seven Hills Winery</b> , Malbec, Walla Walla Valley, 2014	46
428	<b>TERO Estates</b> , Super Tuscan, Columbia Valley, 2012	50
408	<b>Tertulia Cellars</b> , Carménère, Phinney Hill Vineyard, Horse Heaven Hills, 2012	62
422	<b>Tertulia Cellars</b> , Ryan's Reserve, Mourvèdre, Walla Walla Valley, 2012	40
418	<b>Walla Walla Vintners</b> , Cabernet Franc, Columbia Valley, 2014	50
413	<b>Walla Walla Vintners</b> , Sangiovese, Columbia Valley, 2014	40

## PINOT NOIR

453	<b>Argyle</b> , Willamette Valley, 2014	42
455	<b>Domaine Drouhin</b> , Dundee Hills, 2014	68
452	<b>Saviah Cellars</b> , Walla Walla Valley, 2013	41



# RED BLENDS

510	<b>Adamant Cellars</b> , Nalin Blend, Columbia Valley, 2011	74
511	<b>Bergevin Lane</b> , Calico Red, Columbia Valley, 2012	25
517	<b>Bunchgrass Winery</b> , Triolet, Walla Walla Valley, 2013	53
502	<b>Buty</b> , Columbia Rediviva, Phinney Hill Vineyard, Horse Heaven Hills, 2012	81
525	<b>Buty</b> , Merlot-Cab Franc, Columbia Valley, 2013	73
534	<b>Cadaretta</b> , Springboard, Columbia Valley, 2011	81
506	<b>CAVU Cellars</b> , Horizon Red, Columbia Valley, 2010	46
509	<b>Cougar Crest</b> , Dedication Nine, Walla Walla Valley, 2012	36
527	<b>Dunham Cellars</b> , Trutina, Columbia Valley, 2013	51
503	<b>Ensemble</b> , Release #5, Washington State	79
520	<b>Eternal Wines</b> , Rocketman Red, Walla Walla Valley, 2014	44
516	<b>Figgins</b> , Estate, Red Blend, Walla Walla Valley, 2012	148
533	<b>Gino Cuneo Cellars</b> , TRE Nova, Nebbaro, Horse Heaven Hills, 2010	50
513	<b>Gino Cuneo Cellars</b> , Seccopassa, Columbia Valley, 2011	87
535	<b>Girls Night</b> , Walla Walla Valley, NV	28
529	<b>L'Ecole N° 41 Winery</b> , Ferguson, Walla Walla Valley, 2013	104
512	<b>L'Ecole N° 41 Winery</b> , Frenchtown Red, Columbia Valley, 2014	40
526	<b>L'Ecole N° 41 Winery</b> , Apogee, Pepper Bridge Vineyard, Walla Walla Valley, 2013	88
524	<b>L'Ecole N° 41 Winery</b> , Perigee, Seven Hills Vineyard, Walla Walla Valley, 2012	81
515	<b>Leonetti Cellars</b> , Reserve, Walla Walla Valley, 2011	242
539	<b>Lodmell Cellars</b> , Sublime, Columbia Valley, NV	44
523	<b>Long Shadows</b> , Pirouette, Columbia Valley, 2013	97
514	<b>Mansion Creek Cellars</b> , Cuvee, Columbia Valley, 2013	49
000	<b>Marcus Whitman Red</b> , Columbia Valley, 2013	29
505	<b>Mullan Road</b> , Columbia Valley, 2012	69
528	<b>Nine Hats</b> , Red Blend, Columbia Valley, 2014	40
504	<b>Pepper Bridge Winery</b> , Trine, Walla Walla Valley, 2012	105
508	<b>Quilceda Creek</b> , Palengat, Columbia Valley, 2012	219
500	<b>Saviah Cellars</b> , The Jack, Columbia Valley, 2015	27
538	<b>Silverback Vineyards</b> , Référence, Horse Heaven Hills, 2010	170
518	<b>Sleight of Hand</b> , Spellbinder, Columbia Valley, 2014	50
507	<b>Spring Valley Vineyard</b> , Uriah, Walla Walla Valley, 2013	81
532	<b>SYZGY</b> , Saros, Columbia Valley, 2009	81
530	<b>TERO Estates</b> , TERO Red, Walla Walla Valley, 2011	44
521	<b>Three Rivers Winery</b> , River's Red, Columbia Valley, 2015	25
522	<b>Va Piano Vineyards</b> , "Ox" Red Blend, Columbia Valley, 2012	53

# CHARDONNAY

705	<b>Abeja</b> , Washington State, 2014	60
702	<b>àMaurice</b> , Walla Walla Valley, 2015	56
709	<b>Buty</b> , Columbia Valley, 2014	68
713	<b>Charles Smith</b> , Columbia Valley, 2014	31
704	<b>Don Carlo Vineyard</b> , Walla Walla Valley, 2012	30
715	<b>Drink Washington State</b> , Washington State, 2014	35
707	<b>Dunham Cellars</b> , Shirley Mays, Columbia Valley, 2014	44
706	<b>Forgeron Cellars</b> , Columbia Valley, 2013	49
757	<b>Gilbert Cellars</b> , The Matriarch, Wahluke Slope, 2012	68
714	<b>Henry Earl</b> , Columbia Valley, 2012	44
703	<b>L'Ecole N° 41 Winery</b> , Columbia Valley, 2015	44
700	<b>Marcus Whitman</b> , Columbia Valley, 2013	25
716	<b>Sinclair Estate Vineyards</b> , Columbia Valley, 2012	46
701	<b>Tamarack Cellars</b> , Columbia Valley, 2014	27
712	<b>Three Rivers Winery</b> , Reserve, Columbia Valley, 2015	51
711	<b>Waterbrook</b> , Reserve, Columbia Valley, 2013	35
708	<b>Woodward Canyon</b> , Washington State, 2014	72

# RIESLING

717	<b>Dunham Cellars</b> , Lewis Vineyard, Columbia Valley, 2013	35
725	<b>Henry Earl</b> , Wahluke Slope, Columbia Valley, 2013	35
721	<b>Januik Winery</b> , Bacchus Vineyard, Columbia Valley, 2011	35
722	<b>Long Shadows Vintners</b> , Poet's Leap, Dry, Columbia Valley, 2015	35
723	<b>Mackey Vineyards</b> , Columbia Valley, 2011	27
719	<b>Seven Hills Winery</b> , Columbia Valley, 2014	21
718	<b>Sleight of Hand</b> , Magician, Columbia Valley, 2014	45
720	<b>Three Rivers Winery</b> , Columbia Valley, 2014	27
724	<b>Trust Cellars</b> , Columbia Valley, 2013	28

# VIIGNIER

726	<b>àMaurice</b> , Columbia Valley, 2013	49
727	<b>Bergevin Lane</b> , Love Struck, Columbia Valley, 2013	35
728	<b>Cougar Crest</b> , Walla Walla Valley, 2014	36
729	<b>Isenhower Cellars</b> , Snipes Mountain, 2015	39
731	<b>Morrison Lane</b> , Walla Walla Valley, 2012	40
730	<b>Tertulia</b> , Whistling Hills, Walla Walla Valley, 2015	32

## OTHER WHITES

734	<b>Alexandria Nicole Cellars</b> , Albarino, Columbia Valley, 2014	39
736	<b>Amavi Cellars</b> , Semillon, Walla Walla Valley, 2015	42
750	<b>Ardor Cellars</b> , Picpoul/Marsanne, Los Oidos, Walla Walla Valley, 2015	44
738	<b>Buty</b> , Semillon-Sauvignon-Muscadelle, Columbia Valley, 2014	44
748	<b>Cadaretta</b> , Sauvignon Blanc/Semillon, Columbia Valley, 2014	35
740	<b>CAVU Cellars</b> , Sauvignon Blanc, Yakima Valley, 2013	35
747	<b>Drink Washington State</b> , Northern Blend, Columbia Valley, 2014	35
739	<b>Flying Trout</b> , Torrontes, Mendoza, Argentina, 2012	34
737	<b>Kontos Cellars</b> , Gossamer, Columbia Valley, 2014	40
742	<b>L'Ecole N° 41 Winery</b> , Semillon, Columbia Valley, 2014	25
733	<b>Locati Cellars</b> , Pinot Grigio, Walla Walla Valley, 2014	32
735	<b>Mansion Creek Cellars</b> , Waldheim White, Columbia Valley, 2012	41
754	<b>Rotie Cellars</b> , Northern White, Marsanne, WA State, 2014	49
749	<b>Rulo</b> , Grenache Blanc, Yakima Valley, 2013	44
755	<b>Salida Cellars</b> , Albarino, Yakima Valley, 2014	35
752	<b>Three Rivers Winery</b> , Sauvignon Blanc, Columbia Valley, 2015	32
746	<b>Tranche</b> , Slice of Pape Blanc, Columbia Valley, 2012	53
756	<b>Va Piano Vineyards</b> , Sauvignon Blanc, Bruno's, Columbia Valley, 2013	35
753	<b>Waitsburg Cellars</b> , Old Vine, Chenin Blanc, Columbia Valley, 2012	32
743	<b>Waterbrook</b> , Pinot Gris, Columbia Valley 2015	21
745	<b>Woodward Canyon</b> , Sauvignon Blanc, Walla Walla Valley, 2014	52
751	<b>Zerba Cellars</b> , Rousanne, Walla Walla Valley, 2014	42

## ROSÉ

802	<b>Eternal Wines</b> , Beauty, Walla Walla Valley, 2014	35
805	<b>Lodmell Cellars</b> , Saignee, Columbia Valley, 2011	21
806	<b>Long Shadows Vintners</b> , Julia's Dazzle, Pinot Gris Rosé, Horse Heaven Hills, 2014	36
803	<b>Tertulia Cellars</b> , Tempranillo Rosé, Walla Walla Valley, 2014	28
800	<b>Waters Winery</b> , Syrah Rosé, Walla Walla Valley, 2013	29

# DESSERT WINE

(.375 ml)

820	<b>Alexander The Grape</b> , Semillon, "Hula Girl", Red Mountain, 2007	35
814	<b>Alexander The Grape</b> , Semillon, Ice Wine, Red Mountain, 2010	57
818	<b>Alexander The Grape</b> , "20 One" Ice Wine, Red Mountain, 2011	35
812	<b>Alexandria Nicole Cellars</b> , Viognier Ice Wine, Horse Heaven Hills, 2010	62
821	<b>Dunham Cellars</b> , Late Harvest Lewis Vineyard Riesling, Columbia Valley, 2014	62
811	<b>Forgeron Cellars</b> , Late Harvest Semillon, Walla Walla Valley, 2008	28
815	<b>Masset</b> , Margaret Alice, Yakima Valley, 2004	37
816	<b>NW Totem</b> , Elerding Vineyard Late Harvest Viognier, 2006	44
813	<b>Seven Hills Winery</b> , Late Harvest Riesling, Columbia Valley, 2013	46
817	<b>Tertulia Cellars</b> , Late Harvest Semillon, Walla Walla Valley, NV	62
822	<b>Walla Walla River Winery</b> , Late Harvest Gewürztraminer, Walla Walla Valley 2008	40

# PORT

(by the glass)

	<b>Cockburn</b> , 20 Year Tawny, Portugal	14
	<b>Grahams</b> , Vintage Port, Portugal, 2011	16
	<b>Zerba Cellars</b> , LH Syrah, Port, Walla Walla Valley, 2012	12

# THE MARC CELLAR LIBRARY SELECTIONS

*The wine selections in our library, are from some of Washington's premier wine producers in the Walla Walla and Columbia Valleys. Each bottle of wine is of exceptional quality, and was artfully cellared for many years to bring out their exceptional nuances. Savor in their rareness and artistry, as these wines are of limited quantity.*

623	<b>Cayuse, Armada Vineyard</b> , Syrah, Walla Walla Valley, 2011	180
625	<b>Cayuse, Armada Vineyard</b> , "God Only Knows," Grenache, Walla Walla Valley, 2011	180
617	<b>Cayuse, Cailloux Vineyard</b> , Syrah, Walla Walla Valley, 2011	170
624	<b>Cayuse, Cailloux Vineyard</b> , Syrah, Walla Walla Valley, 2012	161
615	<b>Cayuse, En Chamberlin Vineyard</b> , "Impulsivo" Tempranillo, Walla Walla Valley, 2011	200
611	<b>Cayuse, En Chamberlin Vineyard</b> , "Impulsivo" Tempranillo, Walla Walla Valley, 2012	180
619	<b>Cayuse, En Chamberlin Vineyard</b> , Syrah, Walla Walla Valley, 2012	180
620	<b>Friends of Devin</b> , Syrah, Columbia Valley, 2003	130
612	<b>Nicholas Core Cellars</b> , Dauphine, Syrah, Walla Walla Valley, 2005	113

*Please inquire with your server or restaurant Sommelier, Dan McCaffrey.*

## LARGE FORMAT (1.5L)

655	<b>Cayuse</b> , Wallah Wallah Special #4, Syrah, Walla Walla Valley, 2012	380
643	<b>L'Ecole N° 41 Winery</b> , Estate Merlot, Seven Hills Vineyard, 2003	220
648	<b>L'Ecole No 41 Winery</b> , Ferguson, Walla Walla Valley, 2004	340
642	<b>L'Ecole No 41 Winery</b> , Merlot, Walla Walla Valley, 2001	255
649	<b>L'Ecole No 41 Winery</b> , Merlot, Columbia Valley, 2004	200
645	<b>L'Ecole No 41 Winery</b> , Pepper Bridge Vineyard, Apogee, Walla Walla Valley, 2005	330
653	<b>Long Shadows Vintners</b> , Pedestal, Merlot, Columbia Valley, 2004	370
654	<b>Va Piano</b> , Syrah, Columbia Valley, 2007	300

# ALPHABETICALLY LISTED

## ABEJA

705 Chardonnay, Washington State, 2014 60

## ADAMANT CELLARS

510 Red Blend, Nalin Blend, Columbia Valley, 2011 74

## ALEXANDER THE GRAPE

308 Syrah, "The Empress", Red Mountain, 2009 69

814 Semillon Ice Wine, Red Mountain, 2010 57

818 "20 One" Ice Wine, Red Mountain, 2011 35

820 Dessert Wine, Semillon, "Hula Girl", Red Mountain, 2007 35

## ALEXANDRIA NICOLE CELLARS

417 Sergeant Pepper, Carmenere, Horse Heaven Hills, 2012 73

734 Albarino, Columbia Valley, 2014 39

812 Viognier, Ice Wine, Horse Heaven Hills, 2010 62

## ÀMAURICE

406 Malbec, Columbia Valley, 2013 62

702 Chardonnay, Walla Walla Valley, 2015 56

726 Viognier, Columbia Valley, 2013 49

## AMA VI CELLARS

128 Cabernet Sauvignon, Walla Walla Valley, 2013 58

318 Syrah, Walla Walla Valley, 2013 50

736 Semillon, Walla Walla Valley, 2015 42

## ARDOR CELLARS

324 Syrah, Lawrence Vineyard, Columbia Valley, 2013 64

426 Mourvedre, Yakima Valley, 2014 64

432 S,G,M, Columbia Valley, 2014 44

750 Picpoul/Marsanne, Los Oidos, Walla Walla Valley, 2015 44

## BALBOA WINERY

310 Syrah, Walla Walla Valley, 2012 39

## BERGEVIN LANE

123	Cabernet Sauvignon, Moonspell, Columbia Valley, 2011	49
227	Merlot, "Wild Child," Columbia Valley, 2011	49
301	Syrah, "She-Devil," Columbia Valley, 2012	42
511	Calico Red, Columbia Valley, 2013	25
727	Viognier, Love Struck, Columbia Valley, 2013	35

## BETZ

106	Cabernet Sauvignon, "Père de Famille," Columbia Valley, 2013	127
-----	--	-----

## BRADY CELLARS

126	Cabernet Sauvignon, Blue Mountain Vineyard, Walla Walla Valley, 2014	58
-----	--	----

## BRIAN CARTER CELLARS

401	Tuttorosso, Columbia Valley, 2008	61
412	Corrida, Columbia Valley, 2009	61

## BUNCHGRASS

206	Merlot, Walla Walla Valley, 2012	62
419	Red Blend, The Bard, Walla Walla Valley, 2012	53
517	Red Blend, Triolet, Walla Walla Valley, 2012	53

## BUTY

502	Columbia Rediviva, Phinney Hill Vineyard, Horse Heaven Hills, 2012	81
525	Merlot-Cab Franc Blend, Columbia Valley, 2013	73
709	Chardonnay, Columbia Valley, 2014	68
738	Semillon-Sauvignon-Muscadelle, Columbia Valley, 2014	44

## CADARETTA

325	Syrah, Columbia Valley, 2011	62
534	Springboard Red Blend, Columbia Valley, 2011	81
748	Sauvignon Blanc - Semillon, Columbia Valley, 2014	35

## CANVASBACK

116	Cabernet Sauvignon, Red Mountain, 2013	64
-----	--	----

## CASTILLO DE FELICIANA

	Sparkling, Columbia Valley, 2013	53
405	Rosebud, Tempranillo, Columbia Valley, 2012	32

## CAVU CELLARS

404	Barbera, Horse Heaven Hills, 2011	53
506	Horizon Red, Columbia Valley, 2010	46
740	Sauvignon Blanc, Yakima Valley, 2013	35

## CHARLES SMITH

713	Chardonnay, Columbia Valley, 2014	31
-----	-----------------------------------	----

## COUGAR CREST WINERY

329	Syrah, Reserve, Walla Walla Valley, 2008	69
427	Cabernet Franc, Walla Walla Valley, 2009	63
509	Red Blend, Dedication Nine, Walla Walla Valley, 2012	36
728	Viognier, Walla Walla Valley, 2014	36
	Finale Estate Grown Port, Walla Walla Valley, 2009	60

## COUVILLON

223	Sagemoore, Merlot, Columbia Valley, 2009	35
-----	--	----

## DAMA WINES

129	Cabernet Sauvignon, Cowgirl Cab, Columbia Valley, 2012	41
228	Merlot, Walla Walla Valley, 2013	58
304	Syrah, Columbia Valley, 2013	60
430	GSM, Damnation, Columbia Valley, 2011	63

## DON CARLO VINEYARD

217	Merlot, "Estate", Walla Walla Valley, 2009	38
704	Chardonnay, Walla Walla Valley, 2012	30

## DOUBLEBACK

135	Cabernet Sauvignon, Walla Walla Valley, 2013	173
-----	--	-----

## DOUBLE CANYON

120	Cabernet Sauvignon, Horse Heaven Hills, 2011	75
-----	--	----

## DRINK WASHINGTON STATE

715	Chardonnay, Washington State, 2014	35
747	Northern Blend, Columbia Valley, 2014	35

## DUMAS STATION

316	Syrah, Estate, Walla Walla Valley, 2010	59
-----	---	----



## DUNHAM CELLARS

102	Cabernet Sauvignon, Dunham XVIII, Columbia Valley, 2013	73
134	Cabernet Sauvignon, Pursued by Bear, Columbia Valley, 2011	105
214	Merlot, Lewis Vineyard, Columbia Valley, 2006	121
315	Syrah, Columbia Valley, 2012	62
527	Trutina, Columbia Valley, 2013	51
707	Chardonnay, Shirley Mays, Columbia Valley, 2014	44
821	Late Harvest Lewis Vineyard Riesling, Columbia Valley, 2014 (.375ml)	62

## DUSTED VALLEY

132	Cabernet Sauvignon, Columbia Valley, 2013	60
-----	---	----

## ELEPHANT SEVEN WINES

319	Syrah, Yellow Bird Vineyard, Walla Walla Valley, 2014	73
-----	---	----

## ENSEMBLE CELLARS

503	Red Blend, Release #5, Washington State	79
-----	---	----

## ETERNAL WINES

802	Rose, Beauty, Walla Walla Valley, 2014	35
520	Red Blend, Rocketman Red, Walla Walla Valley, 2014	44

## FIGGINS

516	Red Blend, Estate, Walla Walla Valley, 2012	148
-----	---	-----

## FIVE STAR CELLARS

125	Cabernet Sauvignon, Walla Walla Valley, 2012	50
-----	--	----

## FLYING TROUT

414	Malbec, Rattlesnake Hills, 2013	65
739	Torrontes, Mendoza, Argentina, 2012	34

## FORGERON CELLARS

109	Cabernet Sauvignon, Columbia Valley, 2012	56
211	Merlot, Columbia Valley, 2012	53
706	Chardonnay, Columbia Valley, 2013	49
811	Dessert Wine, Late Harvest Semillion, Walla Walla Valley, 2008 (.375ml)	28

## FORT WALLA WALLA CELLARS

105	Cabernet Sauvignon, Walla Walla Valley, 2009	62
218	Merlot, Walla Walla Valley, 2009	56

## GAROFALO FAMILY WINERY

410 Vino Rosso, Columbia Valley, 2010 25

## GARRISON CREEK CELLARS

117 Cabernet Sauvignon, Walla Walla Valley, 2010 102

312 Syrah, Walla Walla Valley, 2010 102

## GILBERT CELLARS

424 Allobroges, Wahluke Slope, 2012 42

757 Chardonnay, The Matriarch, Wahluke Slope, 2012 68

## GINO CUNEO CELLARS

513 Red Blend, Seccopassa, Columbia Valley, 2011 87

533 Red Blend, TRE Nova, Nebbaro, Horse Heaven Hills, 2010 50

## GIRLS NIGHT

535 Red Blend, Walla Walla Valley, NV 28

## GLENCORRIE WINERY

231 Merlot, Columbia Valley, 2011 56

## GRAMERCY CELLARS

119 Cabernet Sauvignon, Columbia Valley, 2012 81

320 Syrah, "Lagnippe", Columbia Valley, 2013 89

425 Tempranillo, Walla Walla Valley, 2013 97

## HENRY EARL WINERY

714 Chardonnay, Columbia Valley, 2012 44

725 Riesling, Wahluke Slope, 2013 35

## ISENHOWER CELLARS

300 Syrah, River Beauty, Columbia Valley, 2013 60

420 Other Reds, Rara Avis, Columbia Valley, 2014 60

421 Other Reds, Jongleur, Petit Verdot, Columbia Valley, 2013 60

729 Viognier, Swipes Mountain, 2015 39

## JANUIK WINERY

721 Riesling, Bacchus Vineyard, Columbia Valley, 2011 35

## KERLOO CELLARS

434 Tempranillo, Columbia Valley, 2011 55

## KONTOS CELLARS

110	Cabernet Sauvignon, Walla Walla Valley, 2010	62
209	Merlot, Walla Walla Valley, 2013	58
332	Syrah, Les Collines, Walla Walla Valley, 2013	71
737	Gossamer, Columbia Valley, 2014	40

## L'ECOLE N<sup>o</sup> 41 WINERY

112	Cabernet Sauvignon, Walla Walla Valley, 2013	65
205	Merlot, Walla Walla Valley, 2013	62
215	Merlot, Columbia Valley, 2013	44
321	Syrah, Columbia Valley, 2013	44
512	Frenchtown Red, Columbia Valley, 2014	40
524	Perigee, Seven Hills Vineyard, Walla Walla Valley, 2012	81
526	Apogee, Pepper Bridge Vineyard, Walla Walla Valley, 2013	88
529	Red Blend, Ferguson, Walla Walla Valley, 2013	104
703	Chardonnay, Columbia Valley, 2015	44
742	Semillon, Columbia Valley, 2014	25
	Cabernet Sauvignon, Walla Walla Valley, 2001 (1.5 L)	117
	Merlot, Walla Walla Valley, 2001 (1.5 L)	108
	Estate Merlot, Seven Hills Vineyard, 2002 (1.5 L)	120
	Estate Merlot, Seven Hills Vineyard, 2003 (1.5 L)	120
	Perigee, Walla Walla Valley, 2005 (1.5 L)	160

## LEONETTI CELLARS

210	Merlot, Walla Walla Valley, 2014	130
515	Red Blend, Reserve, Walla Walla Valley, 2011	242

## LOCATI CELLARS

423	Sangiovese, Walla Walla Valley, 2011	45
429	Barbera, Walla Walla Valley, 2013	38
733	Pinot Grigio, Walla Walla Valley, 2014	32

## LODMELL CELLARS

127	Cabernet Sauvignon, Columbia Valley, 2009	62
539	Red Blend, Sublime, Columbia Valley, NV	44
805	Rosé, Saignee, Columbia Valley, 2011	21

## LONG SHADOWS VINTNERS

122	Cabernet Sauvignon, Feather, Columbia Valley, 2013	105
222	Merlot, Pedestal, Columbia Valley, 2013	97
523	Red Blend, Pirouette, Columbia Valley, 2013	97
722	Riesling, Poet's Leap, Dry Riesling, Columbia Valley, 2015	35
806	Pinot Gris Rosé, Julia's Dazzle, Horse Heavens Hills, 2014	36

## MACKEY VINEYARDS

314	Syrah, Walla Walla Valley, 2009	40
723	Riesling, Columbia Valley, 2011	27

## MANSION CREEK CELLARS

514	Red Blend, Cuvee, Columbia Valley, 2013	49
735	Waldheim White, Columbia Valley, 2012	41

## MANNINA CELLARS

431	Other Red, Seven Hills, Sangiovese, Walla Walla Valley, 2011	39
-----	--	----

## MARCUS WHITMAN

000	Red Blend, Columbia Valley, 2013	29
715	Chardonnay, Columbia Valley, 2013	25

## MASSETT

815	Dessert Wine, Margaret Alice, Yakima Valley, 2004	37
-----	---	----

## MULLAN ROAD

505	Red Blend, Columbia Valley, 2012	69
-----	----------------------------------	----

## MORRISON LANE

402	Other Red, Cinsault, Walla Walla Valley, 2012	58
731	Viognier, Walla Walla Valley, 2012	30

## NINE HATS

528	Red Blend, Columbia Valley, 2014	40
-----	----------------------------------	----

## NORTHSTAR

208	Merlot, Columbia Valley, 2012	67
-----	-------------------------------	----

## NOVELTY HILL

130	Cabernet Sauvignon, Columbia Valley, 2011	41
-----	---	----

## NW TOTEM

816 Dessert Wine, Elerding Vineyard Late Harvest Viognier, 2006 (.375ml) 44

## OTIS KENYON

121 Cabernet Sauvignon, Walla Walla Valley, 2013 83  
229 Merlot, Walla Walla Valley, 2013 69  
302 Syrah, Walla Walla Valley, 2012 69

## PEPPER BRIDGE WINERY

118 Cabernet Sauvignon, Walla Walla Valley, 2012 92  
201 Merlot, Walla Walla Valley, 2013 81  
504 Red Blend, Trine, Walla Walla Valley, 2012 105

## PLUMB CELLARS

313 Syrah, Walla Walla Valley, 2012 60  
433 Sangiovese, Walla Walla Valley, 2012 60

## QUILCEDA CREEK

111 Cabernet Sauvignon, Columbia Valley, 2012 276  
508 Red Blend, Palengat, Columbia Valley, 2012 219

## RASA VINEYARDS

411 Other Red, Monette's Vineyard, Mourvedre, Walla Walla Valley, 2011 69

## REININGER

220 Merlot, Walla Walla Valley, 2011 66

## REVELRY VINTNERS

323 Syrah, Block 19, Wahluke Slope, 2011 69

## ROTIE CELLARS

307 Syrah, Northern Blend, WA State, 2013 64  
407 Other Red, Southern Blend, WA State, 2013 78  
754 Marsanne, Northern White, WA State, 2014 49

## RULO WINERY

749 Grenache Blanc, Yakima Valley, 2013 44

## RUSSELL CREEK WINERY

403 Sangiovese, Columbia Valley, 2008 50

## SALIDA CELLARS

435	Tempranillo, Yakima Valley, 2012	45
755	Albarino, Yakima Valley, 2014	35

## SAVIAH CELLARS

415	Cabernet Franc, Walla Walla Valley, 2012	49
452	Pinot Noir, Walla Walla Valley, 2013	41
500	Red Blend, The Jack, Columbia Valley, 2015	27

## SEVEN HILLS WINERY

115	Cabernet Sauvignon, Walla Walla Valley, 2013	58
219	Merlot, Walla Walla Valley, 2013	58
225	Merlot, Columbia Valley, 2013	37
416	Malbec, Walla Walla Valley, 2014	46
719	Riesling, Columbia Valley, 2014	21
813	Dessert Wine, Late Harvest Riesling, Columbia Valley, 2013	46

## SILVERBACK VINEYARDS

538	Red Blend, Référence, Horse Heaven Hills, 2010	170
-----	--	-----

## SINCLAIR ESTATE VINEYARDS

202	Merlot, Columbia Valley, 2007	65
716	Chardonnay, Columbia Valley, 2013	46

## SKYLITE CELLARS

309	Syrah, Walla Walla Valley, 2010	53
-----	---------------------------------	----

## SLEIGHT OF HAND

518	Red Blend, Spellbinder, Columbia Valley, 2014	50
718	Reisling, Magician, Columbia Valley, 2014	45

## SPRING VALLEY VINEYARD

204	Merlot, Mule Skinner, Walla Walla Valley, 2012	73
507	Red Blend, Uriah, Walla Walla Valley, 2013	81

## SULEI CELLARS

114	Cabernet Sauvignon, Les Collines Vineyard, Walla Walla Valley, 2010	56
-----	---	----

## SWEET VALLEY WINES

138	Cabernet Sauvignon, Walla Walla Valley, 2009	62
-----	--	----

## SYZYGY

108	Cabernet Sauvignon, Columbia Valley, 2009	64
305	Syrah, Walla Walla Valley, 2009	60
532	Red Blend, Saros, Columbia Valley, 2009	81

## TAMARACK CELLARS

212	Merlot, Columbia Valley, 2013	50
701	Chardonnay, Columbia Valley, 2014	27

## TERO ESTATES

107	Cabernet Sauvignon, Hill Block, Walla Walla Valley, 2010	85
428	Other Reds, Super Tuscan, Columbia Valley, 2012	50
530	Red Blend, TERO Red, Walla Walla Valley, 2011	44

## TERTULIA CELLARS

131	Cabernet Sauvignon, Phinney Hill Vineyard, Horse Heaven Hills, 2011	58
408	Carménère, Phinney Hill Vineyard, Horse Heaven Hills, 2012	62
422	Mourvèdre, Ryan's Reserve, Walla Walla Valley, 2012	40
730	Viognier, Whistling Hills, Walla Walla Valley, 2015	32
803	Rosé, Tempranillo Rosé, Walla Walla Valley, 2014	28
817	Dessert Wine, Late Harvest Semillion, Walla Walla Valley, NV	62

## THREE RIVERS WINERY

101	Cabernet Sauvignon, Walla Walla Valley, 2014	63
136	Cabernet Sauvignon, Champoux, Columbia Valley, 2007	95
200	Merlot, Champoux, Columbia Valley, 2008	63
224	Merlot, Columbia Valley, 2013	40
521	Red Blend, River's Red, Columbia Valley, 2015	25
712	Chardonnay, Reserve, Columbia Valley, 2014	51
720	Riesling, Columbia Valley, 2014	27
752	Sauvignon Blanc, Columbia Valley, 2015	32

## TRANCHE CELLARS

746	Slice of Pape Blanc, White Wine, Columbia Valley, 2012	53
-----	--	----

## TRUST CELLARS

724	Riesling, Columbia Valley, 2013	28
-----	---------------------------------	----

## VA PIANO VINEYARDS

113	Cabernet Sauvignon, Bruno's, Columbia Valley, 2011	35
124	Cabernet Sauvignon, Columbia Valley, 2012	73
306	Syrah, Columbia Valley, 2013	73
311	Syrah, Les Collines, Walla Walla Valley, 2013	105
522	Red Blend, "Ox," Columbia Valley, 2012	53
756	Sauvignon Blanc, Bruno's, Columbia Valley, 2013	35

## WAITSBURG CELLARS

753	Old Vine, Chenin Blanc, Columbia Valley, 2012	32
-----	---	----

## WALLA WALLA RIVER WINERY

822	Late Harvest Gewürztraminer, Walla Walla Valley, 2008	40
-----	---	----

## WALLA WALLA VINTNERS

413	Sangiovese, Columbia Valley, 2014	40
418	Cabernet Franc, Columbia Valley, 2014	50

## WATERBROOK

216	Merlot Reserve, Columbia Valley, 2013	47
711	Chardonnay Reserve, Columbia Valley, 2013	35
743	Pinot Gris, Columbia Valley, 2015	21

## WATERS WINERY

800	Syrah Rosé, Walla Walla Valley, 2013	29
-----	--------------------------------------	----

## WOODWARD CANYON

103	Cabernet Sauvignon, Old Vines, WA, 2013	161
104	Cabernet Sauvignon, Artist Series #22, Washington State, 2013	68
203	Merlot, Columbia Valley, 2013	84
708	Chardonnay, Washington State, 2014	72
745	Sauvignon Blanc, Walla Walla Valley, 2014	52

## ZERBA CELLARS

133	Cabernet Sauvignon, Walla Walla Valley, 2012	53
213	Merlot, Walla Walla Valley, 2010	53
328	Petite Sirah, Walla Walla Valley, 2012	89
751	Rousanne, Walla Walla Valley, 2014	42